



## Performance Report for:

<https://listify-demos.astoundify.com/classic/>

Report generated: Mon, Feb 27, 2017, 10:06 AM -0800

Test Server Region: Dallas, USA

Using: Chrome (Desktop) 54.0.2840.71, PageSpeed 1.15-gt1, YSlow 3.1.8

PageSpeed Score <b>A (98%)</b> ^	YSlow Score <b>A (90%)</b> ^	Fully Loaded Time <b>1.7s</b> ^	Total Page Size <b>1.47MB</b> ^	Requests <b>48</b> ^
-------------------------------------	---------------------------------	------------------------------------	------------------------------------	-------------------------

### Top 5 Priority Issues

Defer parsing of JavaScript		▲ AVG SCORE: 70%	JS	HIGH
Serve scaled images		▲ AVG SCORE: 71%	IMAGES	HIGH
Optimize images		▲ AVG SCORE: 69%	IMAGES	HIGH
Minify JavaScript		▲ AVG SCORE: 88%	JS	HIGH
Specify image dimensions		◆ AVG SCORE: 98%	IMAGES	MEDIUM

### How does this affect me?

Studies show that users leave a site if it hasn't loaded in 4 seconds; keep your users happy and engaged by providing a fast performing website.

As if you didn't need more incentive, **Google has announced that they are using page speed in their ranking algorithm.**

### About GTmetrix

We can help you develop a faster, more efficient, and all-around improved website experience for your users. We use Google PageSpeed and Yahoo! YSlow to grade your site's performance and provide actionable recommendations to fix these issues.

### About the Developer



GTmetrix is developed by the good folks at **GT.net**, a Vancouver-based performance hosting company with over 21 years experience in web technology.

<https://gt.net/>

### What do these grades mean?

This report is an analysis of your site with Google and Yahoo!'s metrics for how to best develop a site for optimized speed. The **grades you see represent** how well the scanned URL adheres to those rules.

Lower grades (C or lower) mean that the page can stand to be faster using better practices and optimizing your settings.

### What's in this report?

This report covers basic to technical analyses on your page. It is categorized under many headings:

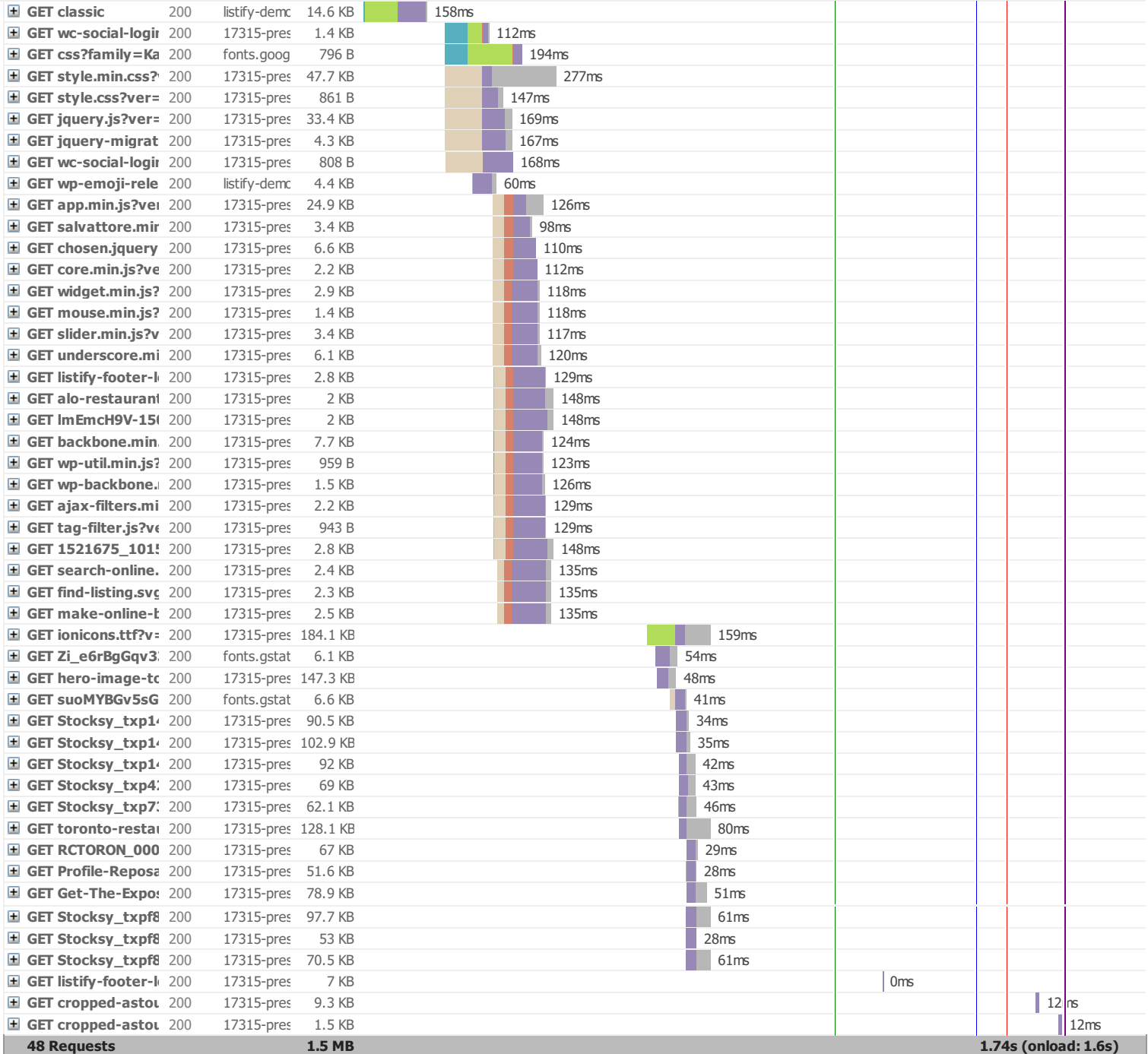
- **Executive:** Overall score information and Priority Issues
- **History:** Graphed history of past performance
- **Waterfall:** Graph of your site's loading timeline
- **Technical:** In-depth PageSpeed & YSlow information

These will provide you with a snapshot of your performance.

## Waterfall Chart

The waterfall chart displays the loading behaviour of your site in your selected browser. It can be used to discover simple issues such as 404's or more complex issues such as external resources blocking page rendering.

**Listify Classic – The last WordPress directory theme you will ever buy.**

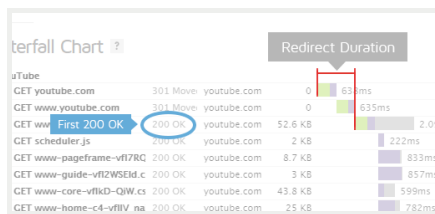


## Page Load Timings

RUM Speed Index: 1,171

0ms Redirect	88ms Connect	69ms Backend	157ms TTFB
1.2s First paint	1.3s DOM int.	1.3s (194ms) DOM loaded	1.6s (1ms) Onload

### Redirect duration



This is the time spent redirecting URLs before the final HTML page is loaded. Common redirects include:

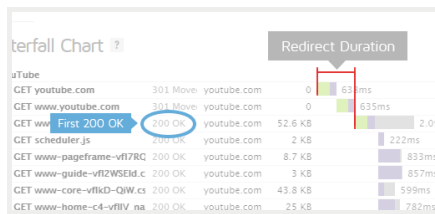
- Redirect from a non-www to www (eg. example.com to www.example.com)
- Redirect to a secure URL (eg. http:// to https://)
- Redirect to set cookies
- Redirect to a mobile version of the site

Some sites may even perform a chain of multiple redirects (eg. non-www to www, then to a secure URL). This timing is the total of all this time that's spent redirecting, or 0 if no redirects occurred.

In the Waterfall Chart, Redirect duration consists of the time from the beginning of the test until just before we start the request of the final HTML page (when we receive the first 200 OK response).

During this time, the browser screen is blank! Ensure that this duration is kept to short by [minimizing your redirects](#).

### Connection duration



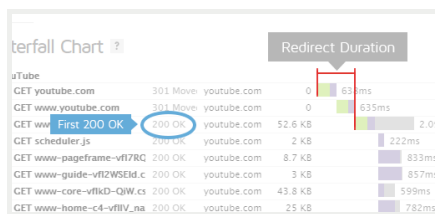
Once any redirects have completed, Connection duration is measured. This is the time spent connecting to the server to make the request to the page.

Technically speaking, this duration is a combination of the blocked time, DNS time, connect time and sending time of the request (rather than *just* connect time). We've combined those components into a single Connection duration to simplify things (as most of these times are usually small).

In the Waterfall Chart, Connection duration consists of everything up to and including the "Sending" time in the final HTML page request (the first 200 OK response).

During this time, the browser screen is still blank! Various causes could contribute to this, including a slow/problematic connection between GTmetrix and the server or slow response times from the server.

### Backend duration



Once the connection is complete and the request is made, the server needs to generate a response for the page. The time it takes to generate the response is known as the Backend duration.

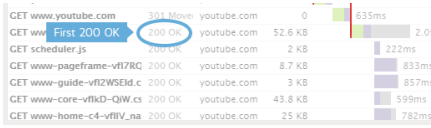
In the Waterfall Chart, Backend duration consists of purple waiting time in the page request.

There are a number of reasons why Backend duration could be slow. We cover this in our ["Why is my page slow"](#) article.

### Time to First Byte (TTFB)



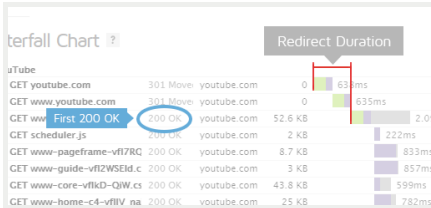
Time to First Byte (TTFB) is the total amount of time spent to receive the first byte of the response once it has been requested. It is the sum of "Redirect duration" + "Connection duration" + "Backend duration". This metric is one of the key indicators of web performance.



In the Waterfall Chart, it is calculated at the start of the test until just before receiving on the page request and represented by the orange line.

Some ways to improve the TTFB include: optimizing application code, implementing caching, fine-tuning your web server configuration, or upgrading server hardware.

## First paint time



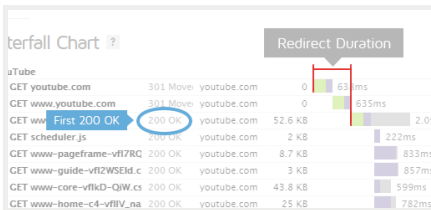
First paint time is the first point at which the browser does any sort of rendering on the page. Depending on the structure of the page, this first paint could just be displaying the background colour (including white), or it could be a majority of the page being rendered.

In the Waterfall Chart, it is represented by the green line.

This timing is of significance because until this point, the browser will have only shown a blank page and this change gives the user an indication that the page is loading. However, we don't know how much of the page was rendered with this paint, so having an early first paint doesn't necessarily

indicate a fast loading page.

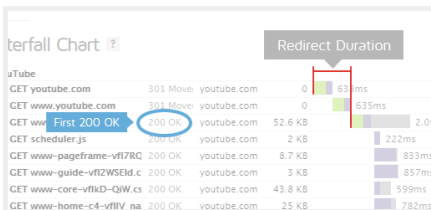
## DOM interactive time



DOM interactive time is the point at which the browser has finished loading and parsing HTML, and the DOM (Document Object Model) has been built. The DOM is how the browser internally structures the HTML so that it can render it.

DOM interactive time isn't marked in the Waterfall Chart as it's usually very close in timing to DOM content loaded.

## DOM content loaded time



DOM content loaded time (DOM loaded or DOM ready for short) is the point at which the DOM is ready (ie. DOM interactive) and there are no stylesheets blocking JavaScript execution.

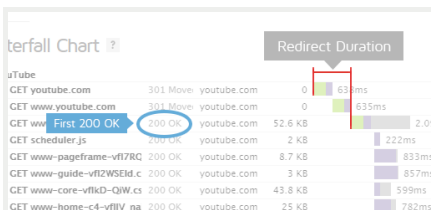
If there are no stylesheets blocking JavaScript execution and there is no parser blocking JavaScript, then this will be the same as DOM interactive time.

In the Waterfall Chart, it is represented by the blue line.

The time in brackets is the time spent executing JavaScript triggered by the DOM content loaded event. Many JavaScript frameworks use this event as a starting point to begin execution of their code.

Since this event is often used by JavaScript as the starting point and delays in this event mean delays in rendering, it's important to make sure that [style and script order is optimized](#) and that [parsing of JavaScript is deferred](#).

## Onload time



Onload time occurs when the processing of the page is complete and all the resources on the page (images, CSS, etc.) have finished downloading. This is also the same time that DOM complete occurs and the JavaScript window.onload event fires.

Note that there may be JavaScript that initiates subsequent requests for more resources, hence the reason why Fully loaded timing is preferred.

In the Waterfall Chart, it is represented by the red line.

The time in brackets is the time spent executing JavaScript triggered by the Onload event.

Note that Onload time was the previous default for when to stop the test for GTmetrix.

## PageSpeed Recommendations

RECOMMENDATION	GRADE	RELATIVE	TYPE	PRIORITY
Defer parsing of JavaScript	A (92)	▲ AVG SCORE: 70%	JS	HIGH
Serve scaled images	A (95)	▲ AVG SCORE: 71%	IMAGES	HIGH
Optimize images	A (98)	▲ AVG SCORE: 69%	IMAGES	HIGH
Minify JavaScript	A (99)	▲ AVG SCORE: 88%	JS	HIGH
Specify image dimensions	A (99)	◆ AVG SCORE: 98%	IMAGES	MEDIUM
Minify HTML	A (99)	◆ AVG SCORE: 98%	CONTENT	LOW
Minify CSS	A (99)	◆ AVG SCORE: 94%	CSS	HIGH
Remove query strings from static resources	B (80)	▼ AVG SCORE: 90%	CONTENT	LOW
Specify a Vary: Accept-Encoding header	A (96)	◆ AVG SCORE: 96%	SERVER	LOW
Avoid bad requests	A (100)	◆ AVG SCORE: 98%	CONTENT	HIGH
Avoid landing page redirects	A (100)	◆ AVG SCORE: 98%	SERVER	HIGH
Enable gzip compression	A (100)	▲ AVG SCORE: 82%	SERVER	HIGH
Enable Keep-Alive	A (100)	▲ AVG SCORE: 93%	SERVER	HIGH
Inline small CSS	A (100)	◆ AVG SCORE: 96%	CSS	HIGH
Inline small JavaScript	A (100)	◆ AVG SCORE: 95%	JS	HIGH
Leverage browser caching	A (100)	▲ AVG SCORE: 59%	SERVER	HIGH
Minimize redirects	A (100)	▲ AVG SCORE: 87%	CONTENT	HIGH
Minimize request size	A (100)	◆ AVG SCORE: 98%	CONTENT	HIGH
Optimize the order of styles and scripts	A (100)	◆ AVG SCORE: 96%	CSS/JS	HIGH
Put CSS in the document head	A (100)	◆ AVG SCORE: 100%	CSS	HIGH
Serve resources from a consistent URL	A (100)	▲ AVG SCORE: 88%	CONTENT	HIGH
Specify a cache validator	A (100)	▲ AVG SCORE: 94%	SERVER	HIGH
Combine images using CSS sprites	A (100)	▲ AVG SCORE: 86%	IMAGES	HIGH
Avoid CSS @import	A (100)	◆ AVG SCORE: 98%	CSS	MEDIUM
Prefer asynchronous resources	A (100)	◆ AVG SCORE: 99%	JS	MEDIUM
Specify a character set early	A (100)	◆ AVG SCORE: 100%	CONTENT	MEDIUM
Avoid a character set in the meta tag	A (100)	◆ AVG SCORE: 100%	CONTENT	LOW

## YSlow Recommendations

RECOMMENDATION	GRADE	RELATIVE	TYPE	PRIORITY
<b>Make fewer HTTP requests</b>	F (36)	⬇️ AVG SCORE: 35%	CONTENT	HIGH
<b>Add Expires headers</b>	B (89)	⬆️ AVG SCORE: 25%	SERVER	HIGH
<b>Use a Content Delivery Network (CDN)</b>	A (90)	⬆️ AVG SCORE: 14%	SERVER	MEDIUM
<b>Minify JavaScript and CSS</b>	A (90)	⬆️ AVG SCORE: 74%	CSS/JS	MEDIUM
<b>Compress components with gzip</b>	A (100)	⬆️ AVG SCORE: 81%	SERVER	HIGH
<b>Avoid URL redirects</b>	A (100)	⬆️ AVG SCORE: 85%	CONTENT	MEDIUM
<b>Make AJAX cacheable</b>	A (100)	⬇️ AVG SCORE: 100%	JS	MEDIUM
<b>Remove duplicate JavaScript and CSS</b>	A (100)	⬇️ AVG SCORE: 100%	CSS/JS	MEDIUM
<b>Avoid AlphasLoader filter</b>	A (100)	⬇️ AVG SCORE: 98%	CSS	MEDIUM
<b>Avoid HTTP 404 (Not Found) error</b>	A (100)	⬇️ AVG SCORE: 99%	CONTENT	MEDIUM
<b>Reduce the number of DOM elements</b>	A (100)	⬆️ AVG SCORE: 93%	CONTENT	LOW
<b>Use cookie-free domains</b>	A (100)	⬆️ AVG SCORE: 46%	COOKIE	LOW
<b>Use GET for AJAX requests</b>	A (100)	⬇️ AVG SCORE: 100%	JS	LOW
<b>Avoid CSS expressions</b>	A (100)	⬇️ AVG SCORE: 99%	CSS	LOW
<b>Reduce DNS lookups</b>	A (100)	⬆️ AVG SCORE: 70%	CONTENT	LOW
<b>Reduce cookie size</b>	A (100)	⬇️ AVG SCORE: 100%	COOKIE	LOW
<b>Make favicon small and cacheable</b>	A (100)	⬇️ AVG SCORE: 100%	IMAGES	LOW
<b>Configure entity tags (ETags)</b>	A (100)	⬆️ AVG SCORE: 83%	SERVER	LOW
<b>Make JavaScript and CSS external</b>	(n/a)		CSS/JS	MEDIUM